

These pages contain Contest of Champions information regarding classifications, categories, rules, regulations and safety guidelines. For additional information and details, please call 1-800-421-4159 or visit www.contestofchampions.com.

SCHEDULE OF EVENTS

<u>EVENT</u>	<u>LOCATION</u>	<u>DATE/TIME</u>
Studio Dance Competition & Awards	Disney's Wide World of Sports® Complex "Milk House Gymnasium"	Friday, March 5, 2010
** Contest schedule is subject to change anytime at the discretion of the Event Director **		

CONTEST DIRECTORS

ROGER HAYES Event Producer

This is Roger's seventeenth year as the Event Producer for the Contest of Champions. Roger resides in Dallas, Texas, he is the owner of Spirit Productions, Inc. He was an instructor for the National Cheerleaders Association for 10 years and was a Collegiate All American. He is a former cheerleader for Tulane University, the NFL New Orleans Saints and Mississippi State University. While living in New Orleans, Louisiana, he was the Official Mascot for the 1984 Louisiana World's Fair, Seymore D. Fair. He is currently serving as Event Producer of the Macy's Thanksgiving Day Parade. He has produced and choreographed cheerleading performances for Mike Miller & Associates, SPECIAL EVENTS, the Macy's Thanksgiving Day Parade, the Jeep Eagle Aloha Bowl, the St. Patrick's Day Parade in Dublin, Ireland, London's Grand Christmas Parade, in London, England and the Southwestern Bell Cotton Bowl Classic Pre-game and Half-time shows in Dallas, Texas. In 1994 he was a production assistant for the Miss Texas Scholarship Pageant and choreographed for the 75th Annual Miss America Boardwalk Parade. As the former founder and owner of America's Best, Roger conducted cheer and dance camps and championships nationwide. He has served as a judge for the National Cheerleaders Association, Atlantic Cheer & Dance, American Cheer Power, Mardi Gras Nationals, Golden State Spirit Association and the 2005 USASF Cheerleading Worlds in Orlando, Florida.

For specific cheer competition related questions, please contact Roger Hayes at:
RHayesCOC@msn.com



LAURA DAVIS Event Producer

Laura is from Dallas, Texas and has been active in the field of Dance/Drill Team since the early 70's. This is Laura's tenth year as the Director of Dance/Drill Competition for the Contest of Champions. She is an Executive Director, Owner & Partner of Starmakers Dance & Performance Camps, Inc. of Richardson, Texas. Her background includes attending Kilgore College earning an Associate of Arts degree while performing as a Rangerette Lieutenant and Swingster. She completed her degree in Dance from North Texas State University and earned her Masters Degree in Physical Education at the University of Texas at Tyler. Laura formerly directed the South Garland High School Southern Belles and was later the Assistant Director and Choreographer of the Kilgore College Rangerettes. Laura was on the Dance Faculty at Kilgore College and Richland College. She was an instructor for N.C.A. SUPERSTAR for 16 years ultimately serving in the office as Curriculum Coordinator. She is currently serving as Event Producer of the Macy's Thanksgiving Day Parade. Additionally, she has choreographed numerous bowl game pre-game & half-time shows such as the Aloha Bowl and Cotton Bowl. She has had extensive choreographic involvement in the dance productions coordinated by Mike Miller & Associates as part of the Macy's Thanksgiving Day Parade each year since 1986. Laura has served as the 1st Vice President & as Sergeant at Arms for the Dance Drill Team Directors of America. She has been an adjudicator and choreographer throughout the country for the past 30 years.

For specific dance competition related questions, please contact Laura Davis at:
Laurabdavis@verizon.net

HOW TO REGISTER

1. COMPLETE ENTRY FORMS

Download the appropriate entry forms from the forms section of the website or request them to be mailed to you with the agreement. We have a “first to enter, last to compete” rule, based on your deposit date. Entry forms and non-refundable fees are not required immediately, but must ultimately be in our office no later than January 14, 2010 to avoid additional fees and forfeiture of “first to enter, last to compete” privilege. Send in the forms with payment to:

Contest of Champions Nationals
1553 Boren Drive
Ocoee, FL 34761

2. INCENTIVE OFFERS

2010 Early Booking Incentive Offer

Confirm your school/gym/company's participation in the 2010 Contest of Champions Nationals by sending in a non-refundable* \$50.00 per person travel package deposit on or before October 1, 2009 and receive:

One Free Quad Rate Coach or Participant Travel Package

** The per-person deposit and the free quad rate package will be reflected in your group's final invoice. Final group numbers, official entry forms and travel package selection does not have to be ready at the time of deposit. Offer is per account, not per group within the account. Example: 3 teams traveling together as one group get one quad rate package discount taken off. Deposits received in our office after October 1st are not eligible for the incentive offer.*

2010 Referral Program

Refer a new group who participates in the 2010 Contest of Champions National Competition and receive:

\$100 Off One Director or Participant Package

A new participating group is defined as a new coach/director and/or new school/gym/company who has never participated in the Contest of Champions before.

**In order to receive this referral program offer, the referring company must mention their referral upon initial phone call or e-mail to set-up their own group's travel details or have their referral person tell us who referred them upon their initial contact with us. The referred account must compete in the 2010 competition in order to receive the discount offer. All incentive discounts will be reflected in the group's final invoice. Coaches/Directors can refer other cheer or dance teams from their own school as long as they meet the requirements and are booked as separate accounts.*

These programs above are for those purchasing travel packages. Please ask about early booking and referral programs for Florida commuter patrons.

EVENT PARTICIPATION & ENTRANCE REQUIREMENTS

1. EVENT PARTICIPATION

The Contest of Champions is an open competition, independent of any association or camp, requiring no qualifier to participate. The studio dance event is open to all dance studios nationwide. Participation in our event requires purchase of a competition package. A contest only commuter package is available to Florida groups. Travel package rates do not include transportation or competition entry fees. For more detailed information about the 2010 competition, please contact our experienced contest event coordinators at 800-421-4159. Additional information is available through our website at www.contestofchampions.com.

2. ENTRY FEES & FORMS

You must send in your contest entry fees and completed entry form prior to January 13, 2010. Please remember that all competition entries are non-refundable from the time they are received into our office. Upon signature of the entry form, the Director is agreeing that they have read, have understood and have agreed to the competition rules & regulations, awards and penalties, and accept its contents.

Changes to entries made after February 3, 2010 will not be reflected in our pre-printed contest programs or adjudication sheets and critique tapes. The name change will be announced the day of competition.

COMPETITION ENTRY FEES:

Team - \$250.00 Per Routine

Show Production - \$250.00

X-Large Ensemble - \$200.00 Per Routine

Large Ensemble - \$175.00 Per Routine

Small Ensemble - \$150.00 Per Routine

Duet/Trio - \$150.00 Per Routine

Soloists - \$100.00 Per Routine

3. CONFIRMATIONS

Once your forms and fees have been processed, you will receive a confirmation letter and payment receipt. A written confirmation will be sent after each change that has been received and processed in our office. It is the Director's responsibility to make sure all information contained in each confirmation is correct.

4. RELAX!

Your event coordinator will be in contact with you throughout your Contest of Champions experience to assist in all aspects of your trip.



All new contest entries, additions or changes must be received in our office no later than 5:00 p.m. on Wednesday, January 13, 2010 in order to avoid the additional fees below. This is not a post marked due date, it is an in our office due date. All fees are for each new, late or revised entry.

Post January 13, 2010 Deadline Fees:

January 14, 2010 - February 3, 2010: \$100.00
February 4, 2010 - February 17, 2010: \$200.00
After February 17, 2010: \$400.00

Note: Entries are not official until all entry forms and fees have been received in our office. Phone calls to make changes or deletions will not be accepted. This policy is in place to aid in the prompt distribution of the final Contest information. You may fax your changes to 407-656-7466. Changes are not official until you have received written confirmation from our office.

4. WAIVER/RELEASE FORM:

Each performer's and alternate's legal guardian must sign a 2010 Waver Release Form. This is a standard form that releases the Walt Disney Company, as well as the Contest of Champions from any liability. Please duplicate as needed. These forms are due no later than February 4, 2009.

STUDIO DANCE CLASSIFICATIONS & CATEGORIES

TEAM CLASSIFICATIONS

All ages are as of March 5, 2010

PEE WEE: 7 years old or under

ELEMENTARY: 8-10 years

JUNIOR: 11-13 years old

SENIOR: 14-18 years old

PRO-AM: 19 years old or older

Teams may enter a Maximum of 4 team performances. The lowest team score of the 4 will be dropped and the remaining 3 team scores will be totaled for overall award purposes. At least 3 routines must be in one size classification (Pee Wee, Elementary, Junior, Senior, and Pro Am) to be eligible for the following awards: Classification National Champion and National Grand Champion. The minimum number of performers for a team performance is 5 members.

TEAM CATEGORIES

JAZZ: A dance performance that includes a combination of rhythmic, creative body movements which interpret and emphasize a musical selection.

HIP HOP: A dance performance emphasizing hip hop or street dance styles, moves and techniques.

MILITARY: A dance performance that emphasizes sharp, concise movements and utilizes formation changes, patterns, footwork and dynamic presentation.

KICK: A dance performance that includes a minimum of 50 high kicks. It may include dance combinations, but must have a majority of the routine focused on kick combinations.

PROP: A dance performance that incorporates and utilizes a visual aid as the object of focus for approximately 75% of the routine.

LYRICAL: A dance performance that incorporates smooth, fluid, technical body movements which emphasize and interpret a musical selection.

NOVELTY/

CHARACTER: A dance performance choreographed to place special attention on a character or theme reflected in the music. Props or costumes may be used.

POM: A dance performance that utilizes poms in approximately 75% of the routine. It should emphasize sharp, energetic arm movements and contain pattern, formations and level changes.

MODERN: A dance performance that utilizes contemporary modern styles and unique, creative movement. This should not be interpreted as "hip-hop" or "street dance".

BALLET/POINTE: A dance performance that emphasizes ballet technique and should include classical steps and movements.

OPEN: A dance performance that combines a variety of dance styles and techniques.

TAP/CLOGGING: A dance performance that emphasizes tap/clogging technique and style.



STUDIO DANCE RULES & REGULATIONS

TIME ALLOWED FOR PERFORMANCES

SOLO	1½ - 2½	Minutes
ALL ENSEMBLES	2 - 3½	Minutes
TEAM	2 - 3½	Minutes
SHOW PRODUCTION	5 - 8	Minutes

Routine performance timing begins and ends with the first and last beat of music. Total performance time includes set-up, entrance, performance and exiting. Performances are scheduled every 5 minutes. No performance will be permitted more than 5 minutes for set up, performance and exit. Total performance timing begins and ends with the first and last foot on the performance floor. Show Productions are scheduled every 15 minutes. No Show Production will be permitted more than 15 minutes for set up, performance and exit. A penalty will be assessed for time violation (see penalty information).

PERFORMANCE FACILITIES

Competition will be held at Disney's Wide World of Sports® Complex. The performance floor is a 50 ft. x 50 ft., Marley dance floor, marked with a center line.

PERFORMANCE SCHEDULE

Performances are scheduled by category and classification in the order deposits are received by our office. If you are the first group to submit your deposits in your classification and category, you will be the last to perform.

Performances will be adjusted accordingly to facilitate costume changes and is subject to change for any reason the Contest Director deems necessary. The decision of the Contest Director is final in all scheduling situations.

MUSIC REQUIREMENTS

All music should be recorded on a quality CD, Mini-Disk, or MP3 player that has excellent musical clarity. Music should be appropriate for all ages – free from inappropriate language and content. The music should be cued and clearly marked with your team name and classification/category.

The Contest of Champions and the *Walt Disney World*® Resort use professional sound systems and are not responsible for any music that has not been recorded on quality materials. Portable compact disc players will not be permitted to plug into the sound system. A sound technician will control the system, however a team

representative will be required to operate your music. This person must stay at the music table throughout each performance.

COSTUMING/CHOREOGRAPHY

Suggestive, offensive or vulgar choreography that is deemed inappropriate for family audiences will be penalized. All routine choreography should be appropriate for all ages, keeping in mind that all performances take place on *Walt Disney World*® property. Vulgar or suggestive material is defined as any movement or choreography that is implying something improper or indecent, sexual in content or utilizes profane gestures. All choreography should be age appropriate. Costuming should be appropriate for all dancers.

PROPS, BACKDROPS & HAZARDOUS MATERIALS

A prop is anything not worn on the body as part of the costume. Props may not require electricity, smoke, fog, fire, fireworks, air compression, aerosol/non-aerosol or any other type of flammable or hazardous materials. In addition, confetti, glitter, balloons or other similar substances may not be used or thrown during the performance. The use of knives, swords or other objects that may be considered dangerous are strictly prohibited.

If you are using props or backdrops, please note that the prop entrance to Milk House is 12 ft. by 9 ft. A prop information form is to be returned to our office by February 5, 2010.

It is strictly enforced that only necessary adult prop crew will be allowed to unload and load props from the loading dock and backstage areas. Performers and children will not be allowed in these areas. Teams will not have access to the performance floor during prop delivery time. All deliveries must be pre-arranged for security clearance.

It is the Coach/Director's responsibility to inspect all props and backdrops for floor protection prior to your performance. Anything that touches the floor must be padded. Any team that damages the performance floor will be billed for repairs. Violation of prop rules & regulations will result in a 10 point penalty as stated in your 2009 Contest of Champions information.

All props brought the day of competition must be removed from the building no later than the last team performance on competition day. This rule is strictly enforced.

If you are shipping to Disney's Wide World of Sports® Complex, storage space is very limited. Props may not arrive prior to Thursday, March 4, 2010 and must leave no later than Monday, March 8, 2010 before noon. No items will be accepted prior to March 4, 2010. Outgoing shipments must be arranged appropriately by the group, and arrive with all shipping documents and account numbers (unless it is prepaid) or it will be discarded. The Contest of Champions and the *Walt Disney World*® Resort will not make any arrangements to have your materials delivered or shipped out and are not responsible for any lost, damaged, or stolen props.

GYMNASTICS / STUNTS

The use of gymnastics, lifts, pyramids and stunts is allowed. The Contest of Champions and the *Walt Disney World*® Resort will not be responsible for any injuries as a result of a performance.

STUDIO DANCE ADJUDICATION & AWARDS

SCORING PROCESS:

A five-member panel of outstanding experts will serve as the judging panel. The high and low score will be discarded and the three middle scores will be added to arrive at the "final score". Ties will not be broken. Score sheets are available to be picked up by the director approximately 45 minutes after each performance.

TEAM COMPETITION

In order to be eligible for the Classification National Champion, and National Grand Champion awards, studio teams must enter three different categories in one size classification. Teams may elect to enter four performances. The lowest team score of the four will be dropped and the remaining three team scores will be totaled.

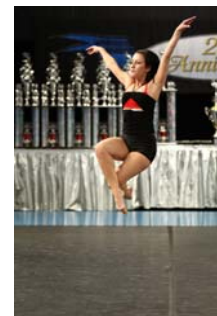
Rating plaques will be given to team entries. Your final score will be used to determine your rating based on the following:

SUPERIOR	255-300 Total Points
EXCELLENT	210-254 Total Points
OUTSTANDING	0-209 Total Points

1st, 2nd & 3rd place trophies will be awarded in each category of competition by classification.

Best in Category 1st, 2nd, & 3rd place trophies will be awarded to the highest scoring team in each performance category regardless of classification. (Jazz, Lyrical, Modern, Ballet/Pointe, Novelty/Character, Pom, Military, Prop, Kick, Open, Hip Hop & Tap/Clogging)

Classification National Champion trophies, banners and individual awards will be awarded to the highest combined scoring Team in each classification of competition (Pee Wee, Elementary, Junior, Senior & Pro-Am).



National Grand Champion will be awarded to the team with the highest combined score in competition regardless of classification. Each member of this team will also receive a unique, one-of-a-kind award.

A Cash Prize in the amount of \$3,000 will be awarded to the National Grand Champion Winner.

SHOW PRODUCTION

Show production is an optional event and does not count toward your overall score for the National Grand Champion. Show production is a dance performance utilizing a combination of dance elements and styles. Presentation should interpret a theme and emphasis should be on the overall entertainment value. Show production groups must have at least 16 performing members from competing teams. Only one show production may be entered.

1st, 2nd & 3rd place trophies will be awarded.

ENSEMBLES

Ensemble performances are optional and are designed for teams wishing to perform additional routines. These performances do not count toward your overall scores for the National Grand Champion award. You may perform any type of routine in the ensemble competition. Ensembles are divided into six classifications based on the participant's age on the date of the competition (Pee Wee, Elementary, Middle, Junior, Senior, and Pro-Am). There is no limit on the number of ensemble performances.

DUET/TRIOS: 2 to 3 performers
SMALL ENSEMBLE: 4 to 6 performers
LARGE ENSEMBLE: 7 to 12 performers
X-LARGE ENSEMBLE: 13+ performers

Ensemble performances will be scheduled back to back. In order to avoid scheduling conflicts, cross-over individuals that perform in more than one ensemble must be noted on the appropriate entry form.

1st, 2nd & 3rd will be awarded medallions in each category of competition.

SOLOS

Soloists will be divided into six classifications based on the participant's age on the date of the competition. Soloists may enter only one routine and can perform any type of routine. Male dancers will be separated from female dancers in all classifications. All ages are as of March 5, 2010.

PEE WEE:	7 years old and under
ELEMENTARY:	8 - 11 years old
MIDDLE:	12 - 14 years old
JUNIOR:	15 - 16 years old
SENIOR:	17 - 18
PRO-AM:	19 or older

1st – 10th place trophies and medallions will be awarded in each category of competition.

College Scholarships will be awarded to the top three senior soloists.

Scholarships will be awarded as follows:

1st Place - \$1,000.00

2nd Place - \$500.00

3rd Place - \$250.00

*A minimum of 12 dancers must be registered in order for scholarships to be awarded. In the event of a tie the scholarship will be divided between the winners

STUDIO DANCE PENALTIES

TIMING PENALTY

Any violation of the following performance timing limitations will result in a three-point penalty being deducted from the total final score of that routine. Performance timing is from the first to last beat of the music.

1. Under 2 minutes or over 3½ minutes for a team or ensemble performance.
2. Under 1½ or over 2½ minutes for a solo performance.
3. Under 5 minutes or over 8 minutes for a show production.

Any violation of the following total performance timing limitations will result in a five-point penalty being deducted from the total final score of that routine.

1. Over 5 minutes for set up, entering, performance and exit for a performance.
2. Over 15 minutes for set up, entering performance and exit for a show production performance.

INAPPROPRIATE COSTUMING/CHOREOGRAPHY/MUSIC

10 points will be deducted from your total score for anything deemed inappropriate. This may include movements, words, music or costuming.

PROP/TAPE/PADDING RULES

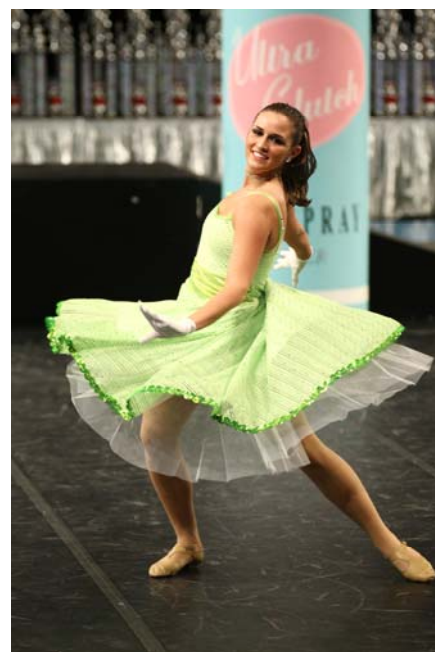
It is the responsibility of the Director to ensure that all props are inspected prior to performance. If an illegal prop or any hazardous material is utilized during a performance it will result in a 10 point penalty from that routine.

Any group that marks, scuffs or damages the floor will be responsible for damages.

BOUNDARY PENALTY

No penalty will be assessed for stepping on or moving out of boundary lines on the performance floor.

*The decision of the Penalty Judge and Contest Director is final in all situations concerning penalties.



DANCE 2010



Group Name: _____

Scale

APPEARANCE

Posture, Grooming, Make-up,
Costuming, Accessories,
Appropriateness

5 Points

4-5: Superior
2-3: Excellent
1: Outstanding

PRECISION

Timing with Music
Memory, Alignment, Spacing
Angles, Dynamics

20 Points

16-20: Superior
13-15: Excellent
1-12: Outstanding

TECHNIQUE

Execution, Placement: Head, Arms, Legs,
Body Extension, Control, Flexibility

20 Points

16-20: Superior
13-15: Excellent
1-12: Outstanding

SHOWMANSHIP

Projection, Expression, Energy
Audience Appeal, Personality,
Poise, Confidence

20 Points

16-20: Superior
13-15: Excellent
1-12: Outstanding

CHOREOGRAPHY

Construction, Creativity, Continuity
Formations, Musical Interpretation,
(Use of Props)

15 Points

16-20: Superior
13-15: Excellent
1-12: Outstanding

LEVEL OF DIFFICULTY

Incorporation of skills

10 Points

4-5: Superior
2-3: Excellent
1: Outstanding

OVERALL IMPRESSION

Perfection of performance

10 Points

8-10: Superior
4-7: Excellent
1-3: Outstanding

RATINGS

Superior	85-100
Excellent	70-84
Outstanding	0-69

**100
TOTAL
POINTS**

Adjudicator's Signature: _____

DANCE PENALTY 2010



Group Name: _____

1. TIMING

Routine Timing: _____

Overtime: _____

3 Points

Undertime: _____

Total Timing: _____

Overtime: _____

(Includes Set-up, Entrance, Performance and Exit)

5 Points

Penalty:

3 Points from Total Score if under 1 1/2 minutes or over 2 1/2 minutes for **Solo** performances.

3 Points from Total Score if under 2 minutes or over 3 1/2 minutes for **Team, Officer & Ensemble** performances.

3 Points from Total Score if under 5 minutes or over 8 minutes for **Show Production** performance.

5 Points from Total Score if over 5 minutes for Set-up, Entrance, Performance and Exit for

Team, Officer & Ensemble performances.

5 Points from Total Score if over 15 minutes for Set-up, Entrance, Performance and Exit for **Show Production** Performances.

2. NUMBER OF PERFORMERS/CLASSIFICATION

(Not applicable to Studio performances and Solo performances)

Number of Performers: _____

5 Points

Number Over: _____

Number Under: _____

Penalty:

5 Points from Total Score if under or over the required number for your Team Performance Classification

JH/MS (5+), Junior Varsity (5+ 11th & Under),

X-Small (5-9), Small (10-15) Medium (16-20) Large (21-36) X-Large (37+)

5 Points from Total Score if under 16 performers in **Show Production**

5 Points from Total Score if under 2 or over 6 performers in a **Small Ensemble**

5 Points from Total Score if under 7 or over 12 performers in a **Large Ensemble**

5 Points from Total Score if under 13 performers in a **X-Large Ensemble**

3. PROP SAFETY

All props, back-drops and scenery must be padded.

Non-marking rubber-soled shoes must be worn.

Violation of Prop Rules & Regulations will result in a 10 Point Penalty

10 Points

4. INAPPROPRIATE COSTUMING/CHOREOGRAPHY/ MUSIC

10 Point Penalty from Total Score for anything deemed inappropriate.

May include movements, words, music, and/or costuming.

10 Points

TOTAL PENALTY:

Adjudicator's Signature: _____